

**SMT. PARMINDER
CHOPRA
CHAIRMAN &
MANAGING DIRECTOR**

**SH. RAJESH KUMAR
AGARWAL
DIRECTOR
(FINANCE)**

**DIRECTOR
(PROJECTS)**

**DIRECTOR
(COMMERCIAL)**

**SHRI P. S. SUNDARAM,
CEO
PFC INFRA FINANCE
IFSC LTD. (a wholly owned
subsidiary of PFC),**

**SHRI H K DAS, ED, Addl.
Charge
PFC CONSULTING LTD.
(a wholly owned subsidiary)**

**MS. VINITA
NARERA, CVO
VIGILANCE**

**SHRI D.V.
SUBBA RAO, ED
(INTERNAL
AUDIT)**

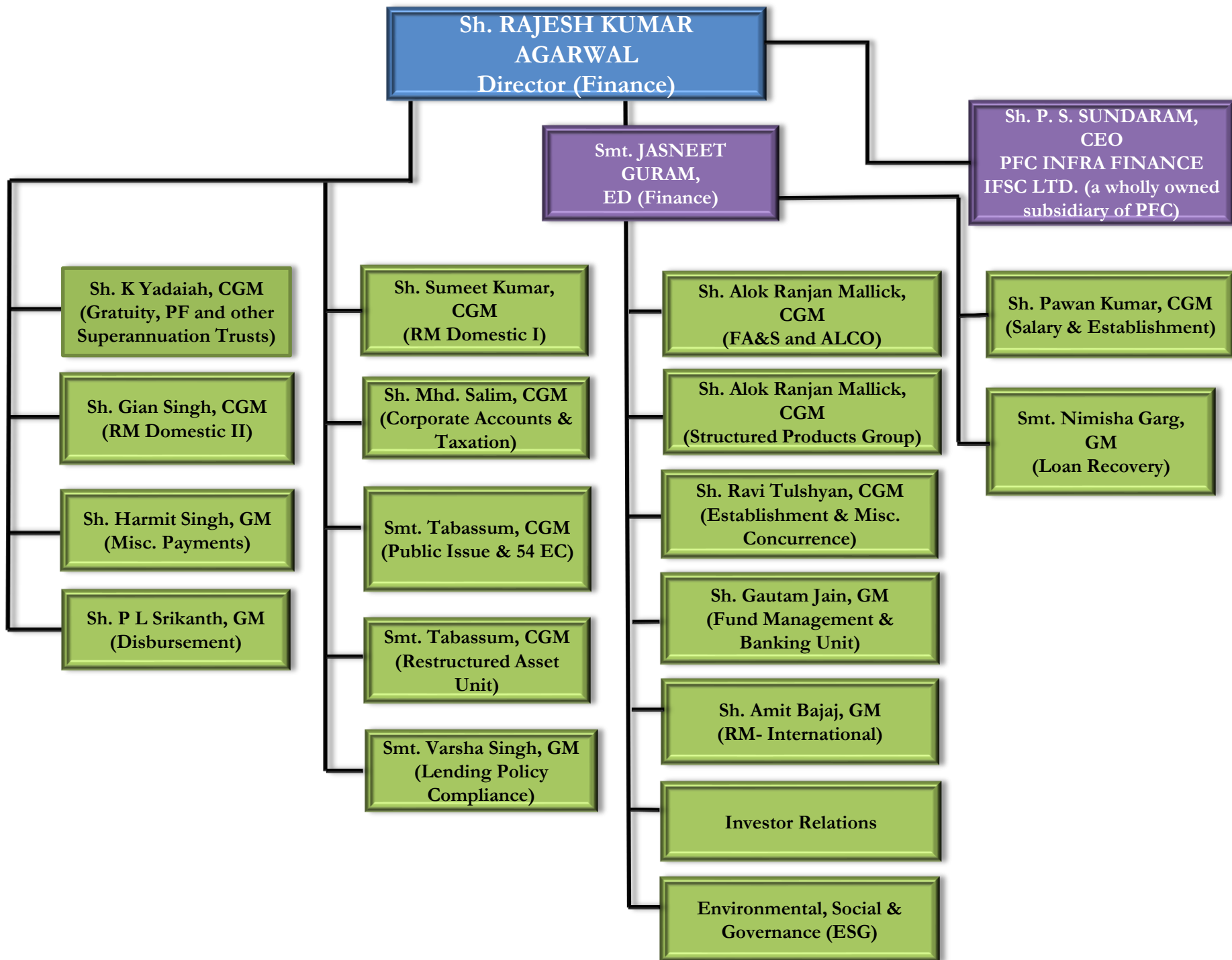
**SHRI MANISH
KUMAR AGRAWAL,
GM
(COMPANY
SECRETARIAT)**

**SHRI DEEPAK
JAIN, ED
(CHIEF RISK
OFFICER)**

**SHRI PAWAN
KUMAR, ED
(CHIEF
COMPLIANCE
OFFICER)**

**SHRI Y. VENUGOPAL,
ED
(CORPORATE
PLANNING &
STRATEGY)**

**SMT. USHA, CGM
(CORPORATE
COORDINATION)**



Director (Projects)

Sh. R. K. CHATURVEDI, ED (Projects-I)

Sh. Pradeep Kumar, CGM (Western Region & Regional Office (West))

Sh. Sanjay Nayak, CGM, (Market Surveillance & Coordination Unit)

Sh. B. Praveen, CGM, (IPP Unit)

Sh. RAJESH KUMAR SHAHI, ED (Projects-II)

Smt. Shehla Sadaf, CGM (Southern Region & Regional Office (South))

Sh. C. Ravi Kumar, CGM, (System Improvement & Quality Management)

Smt. Shweta Vithal, GM (Solar Wind Power Processing Cell 1)

Sh. Alex Varghese, GM (Solar Wind Power Processing Cell 2)

Sh. H. K. DAS, ED (Projects-III)

Sh. Tushar V Ballarpure, CGM (Northern Region)

Sh. Nitin Kumar, CGM, (Central Sector Projects Unit)

Sh. Shwetabh, GM (ER & NER and Regional Office)

Sh. B. S. ARUNACHALAM, ED (Projects-IV)

Sh. Bijendra Singh, CGM (PMU-1 Power)

Sh. Bijendra Singh, CGM (PMU-2 Non Power)

Sh. Madan Mohan Illa, CGM (Business Development (Private Sector))

Smt. PRIYA KUMAR, ED (Projects V)

Smt. Charu Kaistha, CGM (Lending Policy)

Smt. Ankit Bansal, CGM (Stressed Asset Unit)

Sh. Kamlesh Menon, CGM (Infrastructure & Emerging Business Processing Cell)

**Director
(Commercial)**

